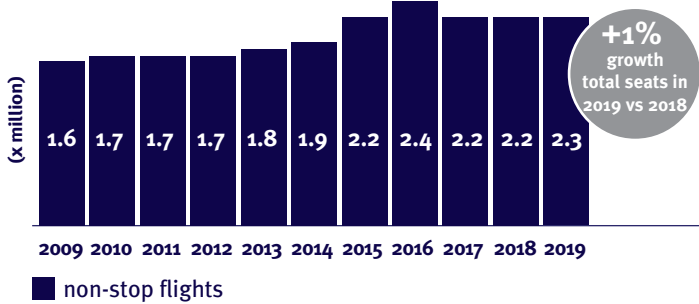




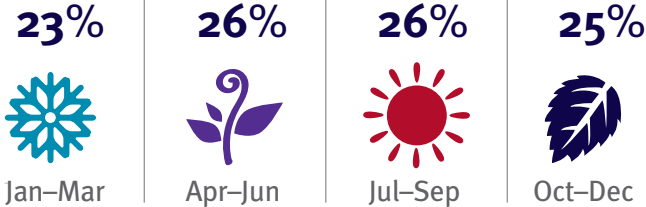
# Denmark

## Outbound travel to the UK

### Annual airline seat capacity Denmark - UK

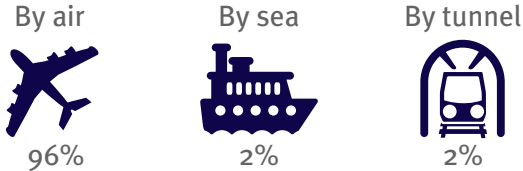


### Seasonal spread of airline seat capacity 2019

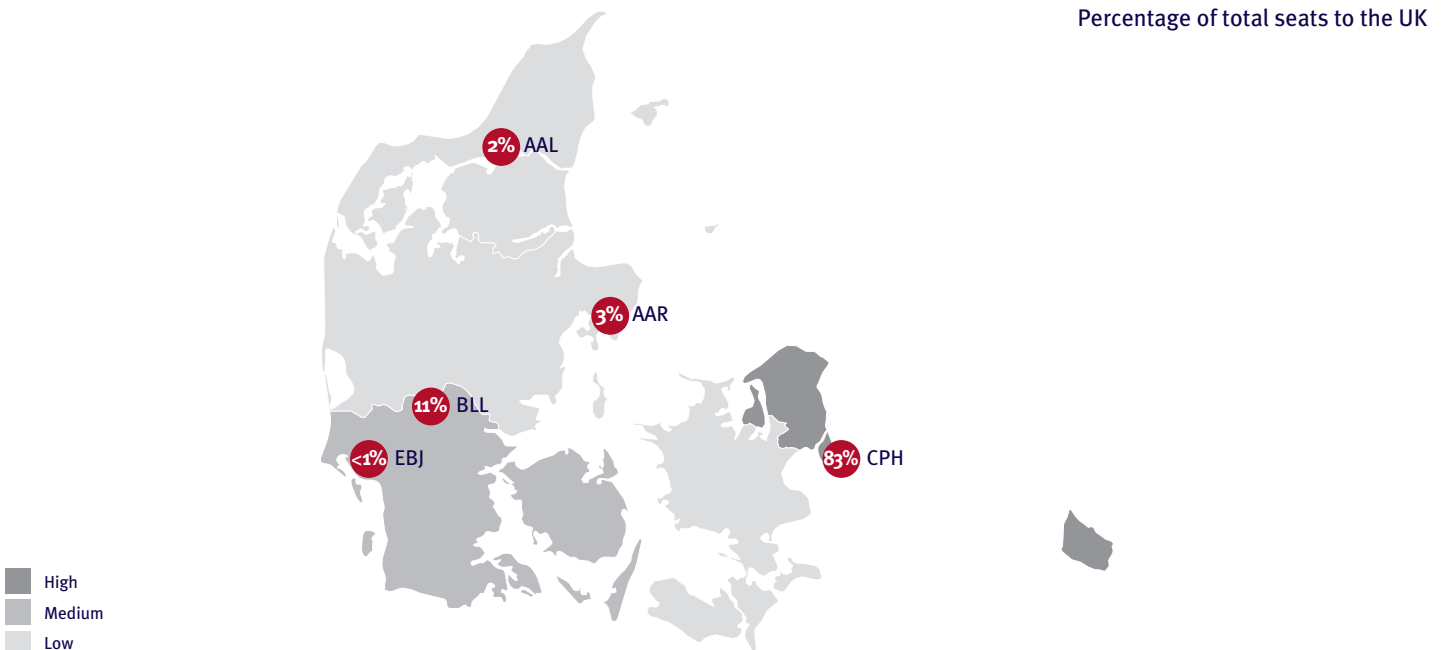


### Market access 2019

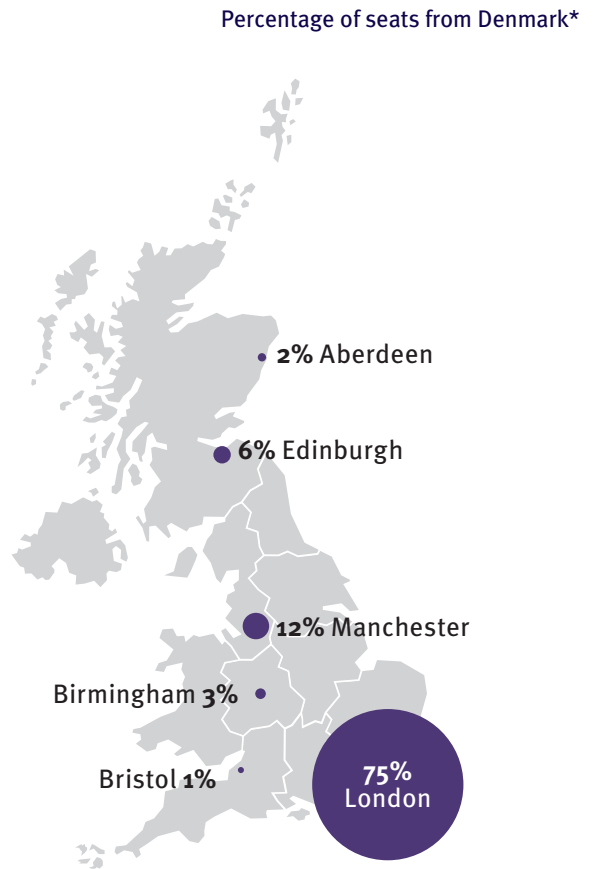
#### Visits from Denmark



### Seat capacity to the UK by origin 2019



### Regional spread of airline seat capacity 2019





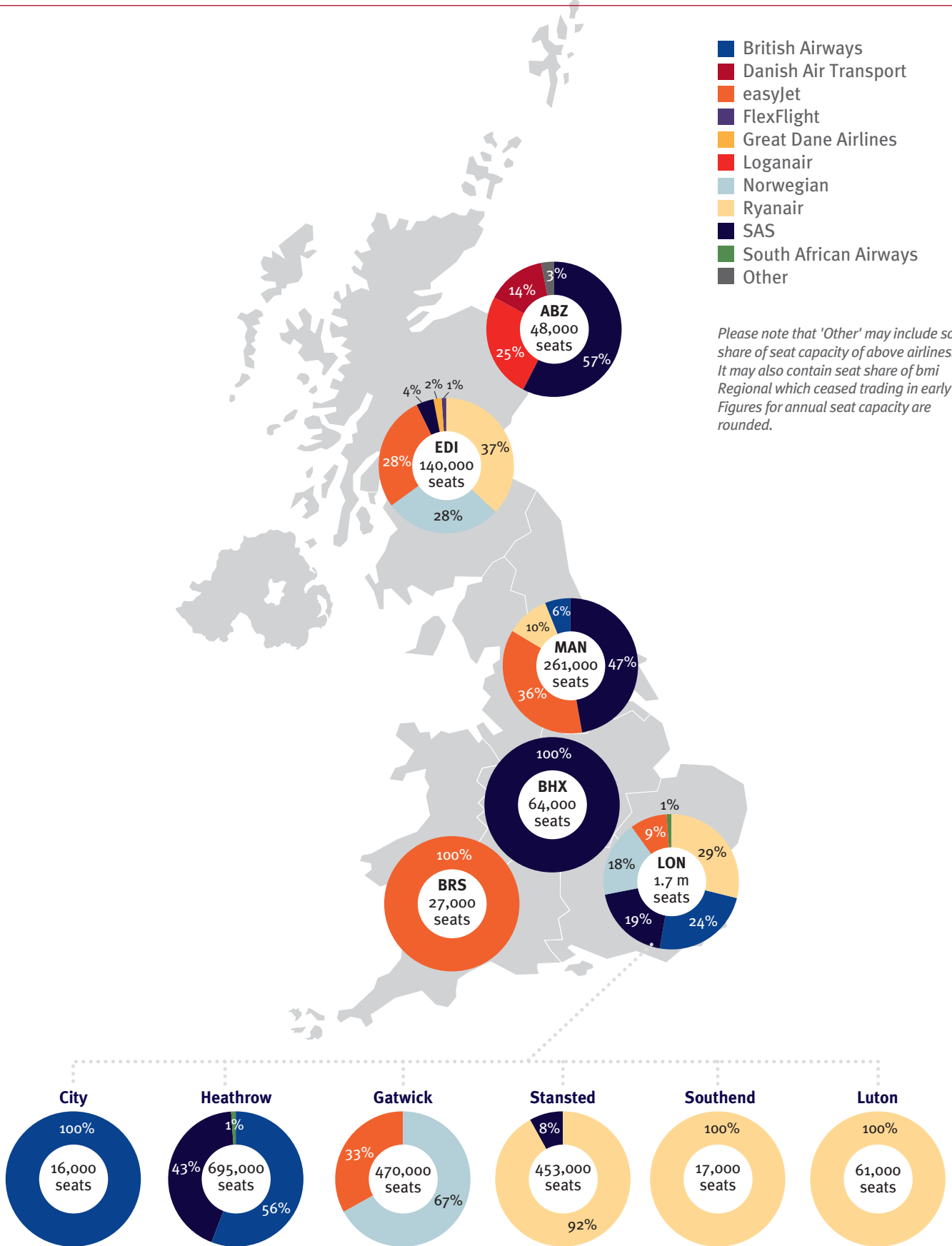
# Denmark

## Outbound travel to the UK

### Seat capacity from Denmark by airline and destination airport in 2019 (selected airports)

- British Airways
- Danish Air Transport
- easyJet
- FlexFlight
- Great Dane Airlines
- Loganair
- Norwegian
- Ryanair
- SAS
- South African Airways
- Other

Please note that 'Other' may include some share of seat capacity of above airlines. It may also contain seat share of bmi Regional which ceased trading in early 2019. Figures for annual seat capacity are rounded.



Source: Apex, non-stop routes only.

ABZ (Aberdeen), BHX (Birmingham), BRS (Bristol), EDI (Edinburgh), LON (London), MAN (Manchester)