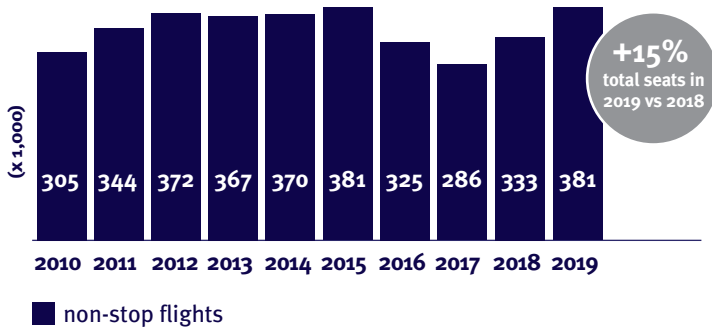




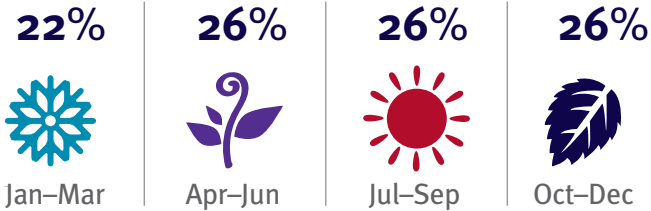
# Brazil

## Outbound travel to the UK

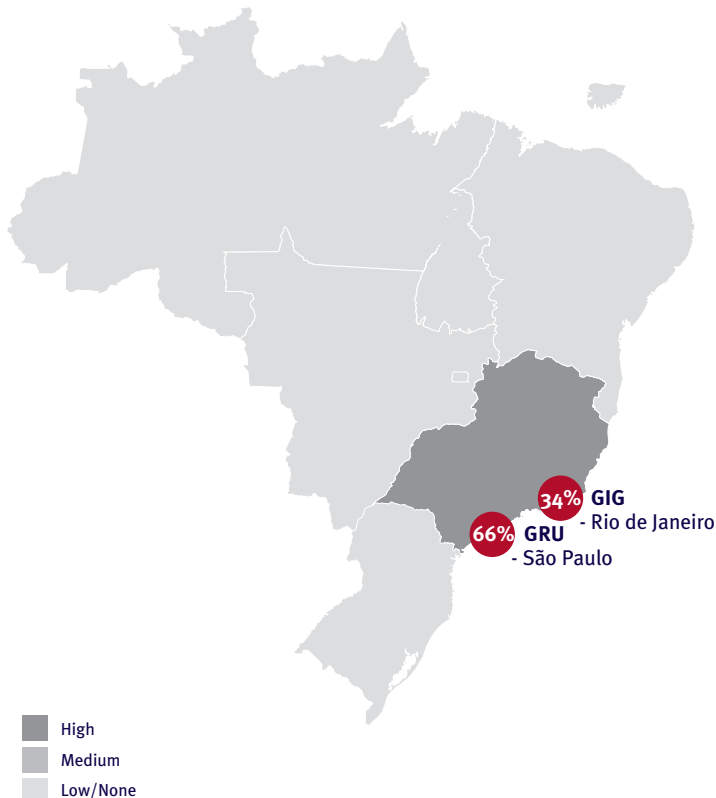
### Annual airline seat capacity Brazil - UK



### Seasonal spread of airline seat capacity 2019



### Seat capacity to the UK by origin 2019

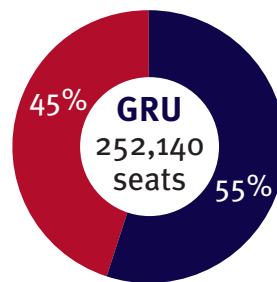


### Regional spread of airline seat capacity 2019

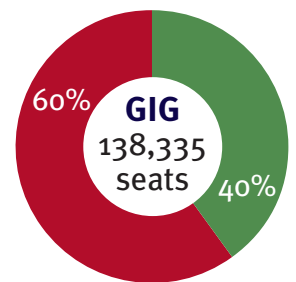


### Seat capacity to the UK by airline and airport of origin 2019

Virgin Atlantic confirmed the route launch of a daily GRU - LHR service on \*March 29, 2020  
 \*Launch on hold indefinitely owing to the effect of COVID-19 on the global aviation industry.



São Paulo



Rio de Janeiro

■ LATAM Airlines Brasil    ■ Norwegian UK  
 ■ British Airways

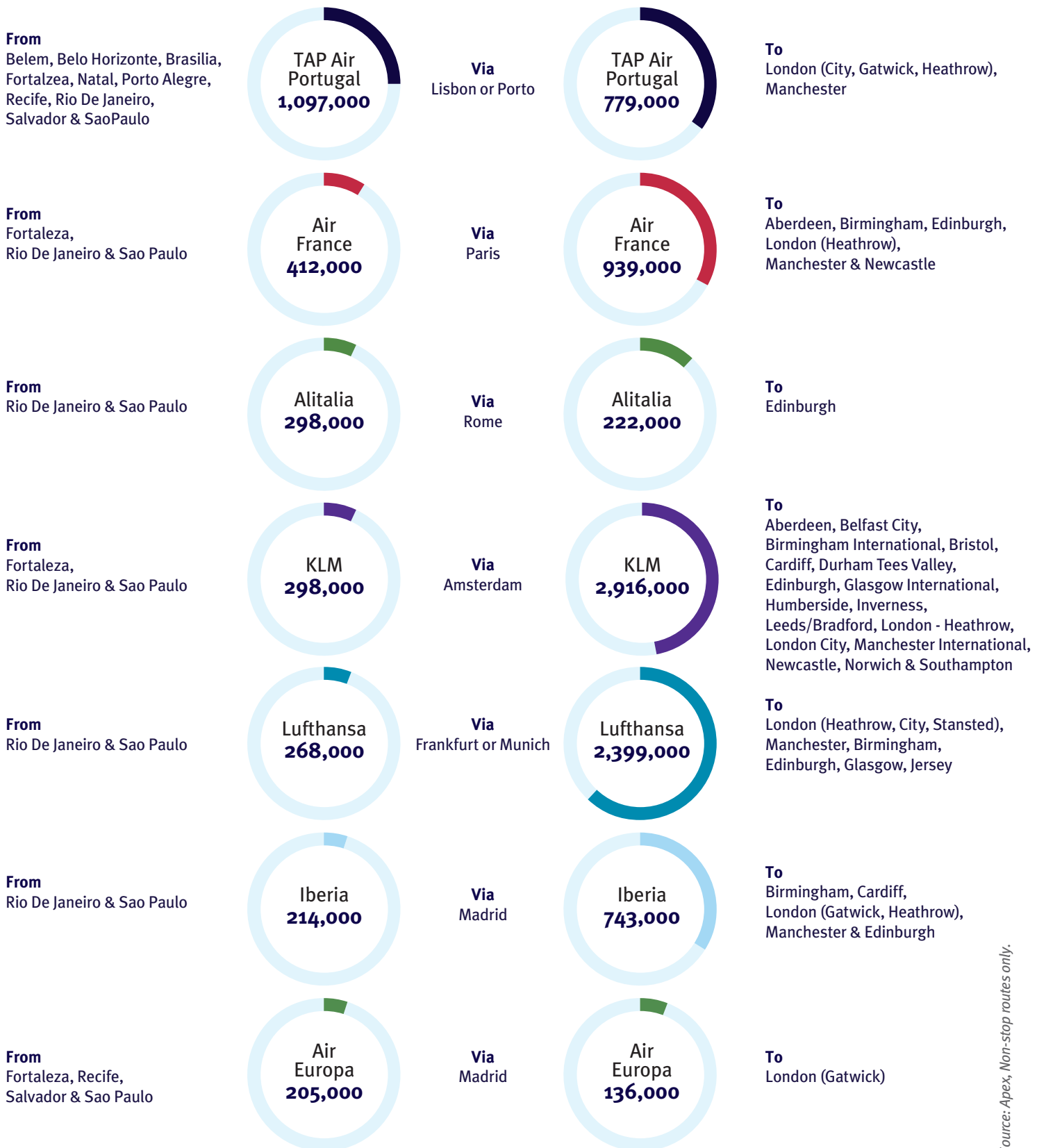
Source: Apex, Non-stop routes only.



# Brazil

## Outbound travel to the UK

### Connectivity on non-stop routes from Brazil to the UK in 2019\*



Source: Apex, Non-stop routes only.

\* Please note that this page only shows examples of connecting non-stop routes.