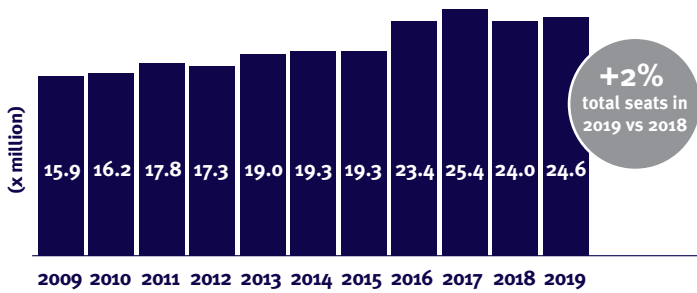




Spain and Canary Islands

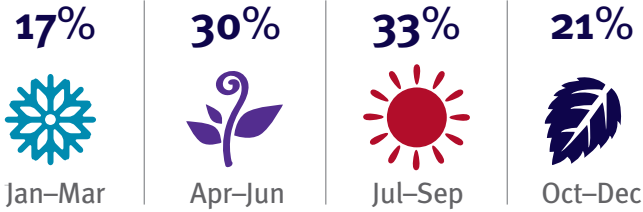
Outbound travel to the UK

Annual airline seat capacity Spain - UK



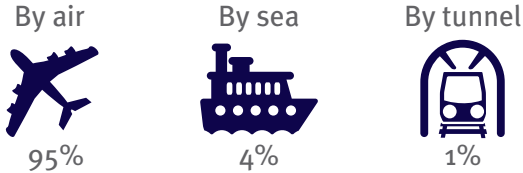
■ non-stop flights

Seasonal spread of airline seat capacity 2019



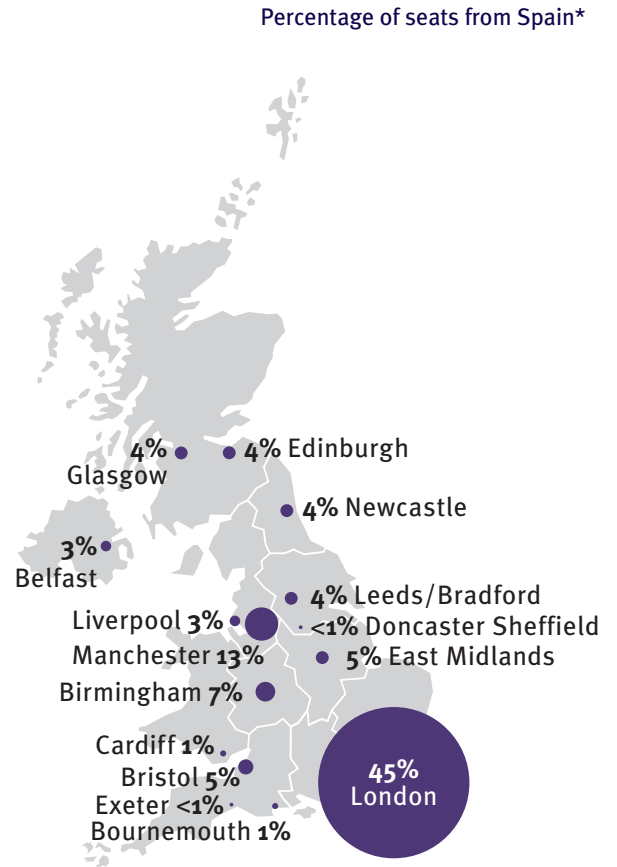
Market access 2019

Visits from Spain

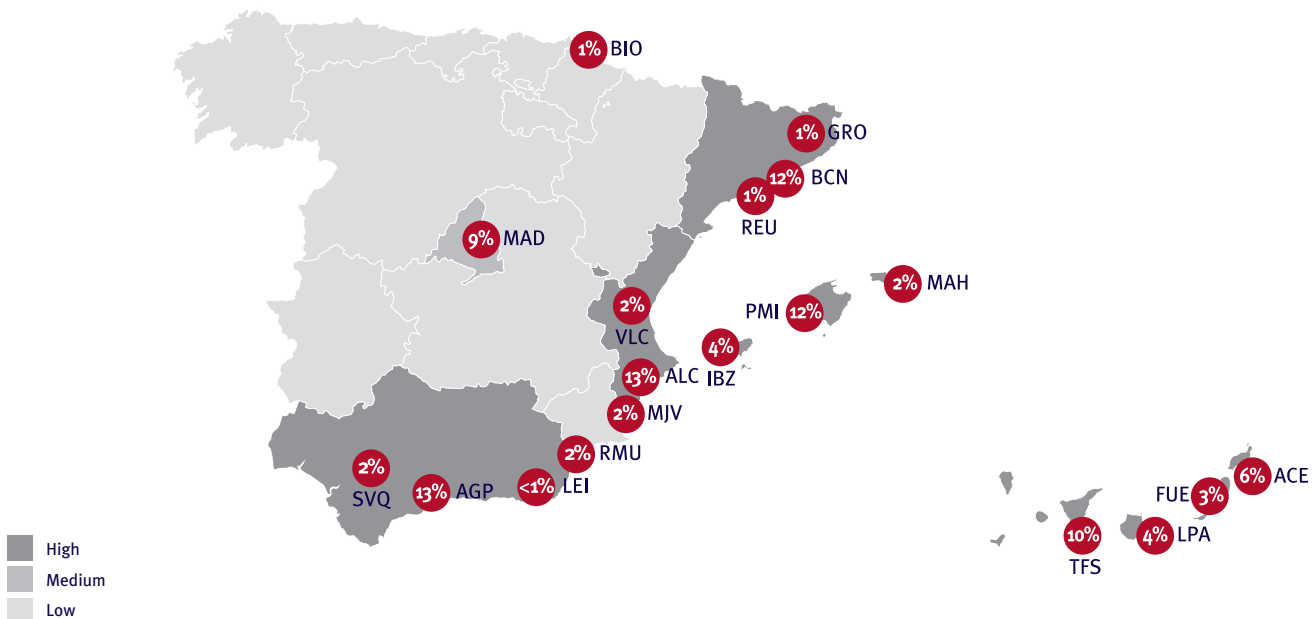


Seat capacity to the UK by origin 2019

Regional spread of airline seat capacity 2019



Percentage of total seats to the UK*





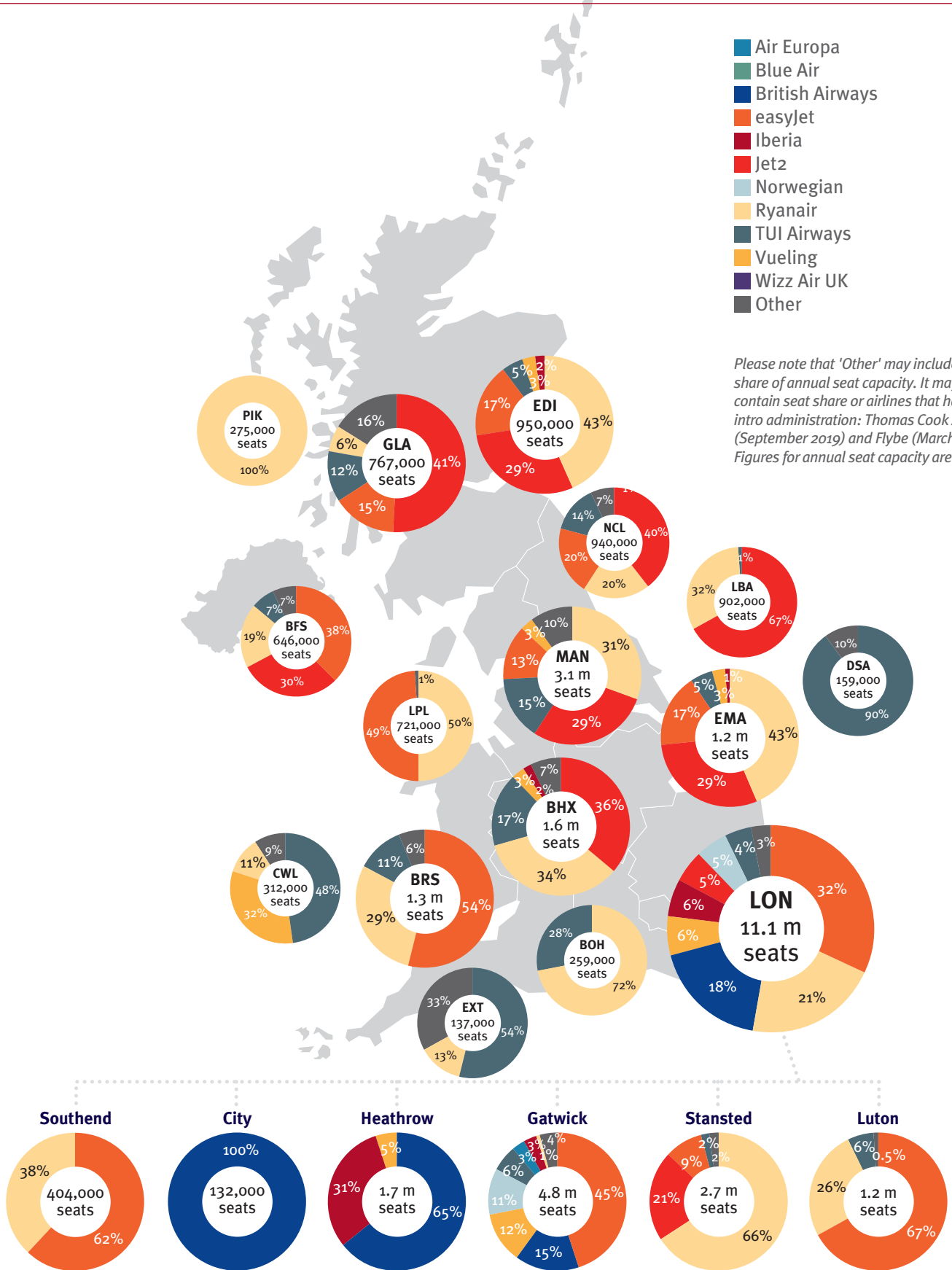
Spain and Canary Islands

Outbound travel to the UK

Seat capacity from Spain by airline and destination airport in 2019 (selected airports)

- Air Europa
- Blue Air
- British Airways
- easyJet
- Iberia
- Jet2
- Norwegian
- Ryanair
- TUI Airways
- Vueling
- Wizz Air UK
- Other

Please note that 'Other' may include some share of annual seat capacity. It may also contain seat share or airlines that have gone into administration: Thomas Cook Airlines (September 2019) and Flybe (March 2020). Figures for annual seat capacity are rounded.



Source: Apex, Non-stop routes only.

BFS (Belfast), BHX (Birmingham), BOH (Bournemouth), BRS (Bristol), DSA (Doncaster Sheffield), EDI (Edinburgh), EMA (East Midlands), EXT (Exeter), GLA (Glasgow), LBA (Leeds Bradford), LON (London), LPL (Liverpool), MAN (Manchester), NCL (Newcastle) and PIK (Glasgow Prestwick)